

August 2018 - In This Issue:

Featured Advertiser

Monthly Advertiser

August Membership Meeting

2018 Board of Directors

Membership Profile

Maximize Your Membership

2018 Sponsors



August Meeting

Make your reservations today!

Wednesday, August 22

'When Cancer Comes to Work'



Dorothy Pergola

Learn how Gilda's Club can be a resource to employers when an

Featured Advertiser

Hilliard Lyons



HILLIARD LYONS™ Trust Company

2018 ANEW Meeting Dates

- September 26
- October 24
- November 14*
- December 12 *

* These meetings are not being held on the 4th week of the month. All meetings are scheduled to be held at the Evansville Country Club.

Please note that the December meeting date for the Holiday Bazaar and Luncheon has changed to December 12.

employee is impacted by cancer. This can be as a result of their own diagnosis or that of a friend or loved one, or loss of loved one, friend or co-worker. Learn about some resources that can help and a few reasons why there are things NOT to say.

11:30 am Networking begins
12:00 pm - 1:00 pm Program

join us at the
Evansville Country Club

** Please remember, no denim is allowed in the upstairs dining area at ECC.*

Reservation deadline:
2:00 pm Friday, August 17
RSVP at evansvilleanew.org

****Guest fee: \$22.00****

Menu:

Shredded Chicken Taco Salad with cilantro lime dressing
Cheesecake

Vegetarian and Gluten free options upon request only.

2018 Board of Directors

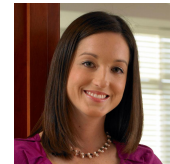
President: Jill Rawley
1st VP, Membership: Michele Graham
2nd VP, Programs: Angie Hargett
Secretary: Angie Richards Cooley
Treasurer: Julie Brauser
Asst Treasurer: Margaret Kimmel
Historian: Joyce Molinet
Orientation Chair: Chelsea Schmidt
Special Events Chair: Lindsay Botsch
Marketing Chair: Claire Bosma
Directors: Lindsay Charles
Tracy Wilson
Tammy Brown
Linda Wulf
Rita Joest

**** Save-the-Date ****

Recruitment Event
Wednesday, September 19
Stacy Steven's home - 1615 Riverview Ct, Evansville
4:00 pm-6:00 pm

Letter from the President

Hello Fellow ANEW Members,



I hope that everyone is having a great start to the month as summer ends and the school year begins. I know it was a rough week for me - my youngest started Kindergarten. Although it was somewhat sad that my baby will be in school full time now, I really enjoyed witnessing her excitement for change and the willingness to grow and learn.

Just like my daughter, I have been thinking about ANEW in the same way. I wanted to take time to evaluate our organization and make plans for the future. I held a retreat for our board members just this week where we created a strategic plan. It was important that we all took a step back from our day-to-day board member duties and assess where ANEW is headed and what our priorities should be. We focused much of our time on member retention as well as growth of our organization. There were a lot of wonderful ideas that came out of the session which were then turned into action plans. You may see some of these ideas implemented this year but also some will be phased in over the following years. All of the board members are really working hard to ensure ANEW is accomplishing our mission.

I welcome you to reach out to me or any board member with suggestions you may have or to ask about our retreat. We would be happy to talk with you.

See you soon,

Sincerely,
Jill Rawley
ANEW President 2018

Monthly Advertiser

German American Bank

Superior service, local responsive decision-making, and strong financial services from a strong team

Sherri Alley
Regional Vice President,
Private Banker

Lindsay Botsch
Regional Vice President,
Commercial Banking

Rachel Dierlam
Vice President,
Treasury Management

German American Bank
Banking | Insurance | Investments
Member FDIC
Evansville & Newburgh: (812)962-2265 • germanamerican.com

September Membership Meeting
Wednesday, September 26
National Speaker
The World Belongs to the Encourager
Erik Rheam
11:30 am-1:00 pm

Membership Profile

5 Things you Didn't Know about Tresa Miller



1. When she was in Elementary School, she was Health Queen in 5th grade because she was the fattest girl in her class.
2. When she was in high school, her hair was to her knees and she ironed it on her mom's ironing board.
3. When she was in college, she was a Madrigal, worked two jobs and still made the Dean's list!
4. At her wedding, she drank champagne with her bridesmaids all morning and grinned through the entire ceremony.
5. Her most embarrassing moment at her current job was when she asked a long term client when her baby was due, but she wasn't pregnant.

Tresa is the owner of Grateful Threads.

Thank you, Tresa, for sharing with us!



Job Postings are available on our ANEW Website

If your company or organization has a job opening that would benefit a member of ANEW, consider posting this on our website under our Job Postings. Contact Lori Otmann if you have a listing.

Maximize Your Membership

- When corresponding with ANEW, please use info@evansvilleanew.org for your email
- The deadline for registering for all meetings is the Friday before the meeting at 2 pm. This allows us time to calculate attendance and notify ECC with reservation numbers.
- Please join in on after-hours networking here on the [ANEW LinkedIn Group page](#), stay connected with frequent updates on the [ANEW Facebook](#) and [LinkedIn pages](#) as well!

Be sure to follow ANEW on social media:
Twitter: @ANEW_EVV **Facebook:** ANEWEVV

2018 Sponsors

January

Schultheis Insurance
The Women's Hospital

April

Within Sight, LLC
Harding & Shymanski

July

Deja Vu Skin & Vein Center
LaQuinta Inn

October

Edward Jones - Janet
Schultheis

Membership Recruitment Event

EPD Foundation

February

Tracy Zeller Jewelry
Evansville Plastic Surgical
Associates

May

Slade Print
Evansville Plastic Surgical
Associates

August

Hilliard Lyons
First Bank

November

The Heart Hospital
Sheets, Charles & Charles

Membership Appreciation Event

Hafer
First Bank
Edward Jones - Janet
Schultheis
Jones Wallace
Harding, Shymanski &
Company, P.S.C.
Tri-State Orthopaedics
Sheets, Charles & Charles

March

Sheets, Charles & Charles
Ark Crisis Child Center

June

The Women's Hospital
Raymond James - Margaret
Kimmel

September

German American Bank
Evansville Plastic Surgical
Associates

December

Kemper CPA

A Network of Evansville Women

PO Box 3192
Evansville, IN 47731

Copyright 2018

A Network of Evansville Women. All rights reserved.

[Click here to register for the August meeting.](#)

STAY CONNECTED

[Like us on Facebook](#)

A Network of Evansville Women, PO Box 3192, Evansville, IN 47731

SafeUnsubscribe™ {recipient's email}.

[Forward this email](#) | [Update Profile](#) | [About our service provider](#)

Sent by info@evansvilleanew.org in collaboration with

Constant Contact 

Try it free today