



September 2017 - In This Issue:

Featured Advertiser

Monthly Advertiser

Maximize your Membership



[September Meeting](#)

[Make your reservations today!](#)

Wednesday, September 27

'Make a Scene'

Featured Advertiser

[German American Bank](#)

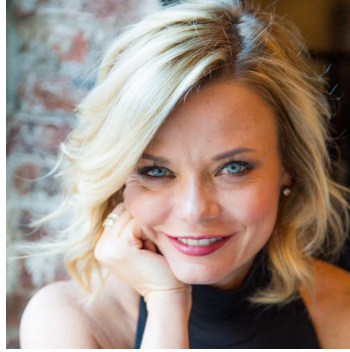
Superior service, local responsive decision-making,
and strong financial services from a strong team

		
Sherri Alley Regional Vice President, Private Banker	Lindsay Botsch Regional Vice President, Commercial Banking	Rachel Dierlam Vice President, Treasury Management

 **German American**
Banking | Insurance | Investments
Member FDIC

Evansville & Newburg: (812)962-2265 • germanamerican.com

ANEW Networking Challenge



Susan Hyatt

11:30 am Networking begins
12:00 pm Program begins

join us at the
[Evansville Country Club](#)

Reservation deadline:
2:00 pm Friday, Sept 22
RSVP at [evansvilleanew.org](#)

Guest fee: \$25.00

Menu:

Chicken, Spiral noodles, Heirloom Tomatoes, and Lemon Tartlet for desert.

Vegetarian and Gluten free options upon request only.

2017 Board of Directors

Officers:

President - Rita Bauer
1st VP, Membership - Jill Rawley
2nd VP, Programs - Joyce Molinet
Treasurer - Michele Graham
Asst Treasurer - Kristie Byrns
Secretary - Angie Hargett

Our networking challenge is underway. Be sure to complete the form on the [home page](#) of the website to enter your name for a chance for the grand prize.

Last day to complete this task is Friday, September 15.

Monthly Advertiser
[Kemper CPA Group](#)



2018 Slate of Officers

President: Jill Rawley

1st VP, Membership: Michele Graham

2nd VP, Programs: Angie Hargett

Secretary: Angie Richards Cooley

Treasurer: Kristie Byrns

Asst Treasurer: Julie Brauser

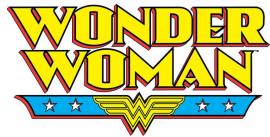
Orientation Chair: Chelsea REXING

Directors:

Melanie Fairchild
Lauren Jones
Margaret Kimmel *
Lindsay Charles *
Lindsay Botsch *
Chelsea Rexing (Technology Chair)
Janet Schultheis (Orientation Chair)
Angie Schaffstein (Special Events Chair)
Angie Richards Cooley (Historian Chair)

*Denotes new to Board 2017

**** Save-the-Date ****



**October 25
Membership Meeting**

Annual Meeting

Sign Up Today!

**Save the Date for our
Holiday Bazaar
December 13 at
The Evansville Country Club**

A few of the Vendors that will be on hand:

Fusion Spa
Nuskin
Mary Kay

Special Events Chair: Lindsay Botsch

Technology Chair: Claire Bosma

Directors: Margaret Kimmel
Lindsay Charles
Tracy Wilson
Tammy Brown
Rita Bauer

5 Things you didn't know about Michelle Smith

Michelle is a Partner at Kemper CPA Group where she has been employed since 2008. She graduated from Ball State University in 1991. Michelle has been married to her high school sweetheart for over 25 years.



She has 3 children and 2 granddaughters. She is a member of the YWCA, EPD Foundation, Women's Fund of Vanderburgh Co, Arc of Evansville and was just elected to the Warrick County Community Foundation Board.

1. Greatest Accomplishment?
Becoming a partner at Kemper.
2. People would be surprised if they knew?
I had my first child very young. I was still in high school. I then put myself through college graduating in 3 1/2 years. Never let anyone tell you that you can't accomplish your dreams. The only thing holding you back is you!
3. Name one item you cannot live without when you travel?
My iphone. I know, sad, right?
4. When I was in High School I wanted to grow up to be?
An accountant and more specifically a partner at a CPA firm. Seriously, this was my career goal in high school. I blame it on my high school accounting teacher. She insisted I take an accounting class and here I am.
5. How do you hope to be remembered?
For being a generous and caring person.

Dakri Sinclair
The Loop Tassel
DPB Fine Arts
Uncharted International
Goat Queen Gifts
Smiths Sweet Southern Tees
Mulberry Jeans

Michelle has been an ANEW member for 9 years.

Door Prize Donations from:

Deja Vu Skin & Vein Center
Banterra Bank

If you have a business that would like to participate in our Annual meeting or our Holiday Bazaar, please contact [Angie Schaffstein](#).

Maximize Your Membership

- When corresponding with ANEW, please use info@evansvilleanew.org for your email
- Please join in on after-hours networking here on the [ANEW Linkedin Group page](#), stay connected with frequent updates on the [ANEW Facebook](#) and [Linkedin pages](#) as well!
- Respond to [Lori Otzmann](#) with the subject of 'ANEW Social' for a chance to win this month's prize.

Be sure to follow ANEW on social media:
Twitter: @ANEW_EVV **Facebook:** ANEWV

2017 Sponsors

January

Schultheis Insurance
The Women's Hospital

April

February

Banterra Bank
Evansville Music Academy

May

March

Tracy Zeller Jewelry
Ark Crisis Child Center

June

Within Sight, LLC
Payne Wealth Partners

AlphaGraphics
Within Sight, LLC

The Women's Hospital
Raymond James - Margaret
Kimmel

July

Deja Vu Skin & Vein Center
LaQuinta Inn

August

Edward Jones-Janet Schultheis
First Bank

September

German American Bank
Kemper CPA

October

Tracy Zeller Jewelry

November

Deaconess Hospital
Banterra Bank

December

Kemper CPA

Founder's Day Breakfast

**Membership Appreciation
Event**

**Membership Recruitment
Event**

Jones Wallace

A Network of Evansville Women

PO Box 3192
Evansville, IN 47731

Copyright 2016 A Network of Evansville Women. All rights reserved.

*Click here to
register for the
September
meeting.*

STAY CONNECTED

[Like us on Facebook](#)

A Network of Evansville Women, PO Box 3192, Evansville, IN 47731

[SafeUnsubscribe™ {recipient's email}](#)

[Forward this email](#) | [Update Profile](#) | [About our service provider](#)

Sent by info@evansvilleanew.org in collaboration with

Constant Contact 

Try it free today