



March Membership Meeting

Personal Empowerment Starla West

Focusing on uplifting women through professional leadership and personal growth.

Starla West is a second-generation woman entrepreneur dedicated to helping business professionals and employers upskill emotional intelligence to lead more effectively and prepare them for the future of work in our ever-growing knowledge economy.

Starla's expertise transcends a variety of industries where her tailored strategies and proven solutions empower business leaders with the right tools and resources to:

- be more influential & persuasive
- make better decisions and achieve superior results
- stay relevant & competitive while thriving in a knowledge economy
- position them for success and become more visible & promotable
- attain their highest level of executive performance



MENU:

Regular: Chicken Bacon Wrap with Chips

Gluten: House Salad with Chicken

Veggie: Teriyaki Bowl

Dessert: Lemon Bar

Non-Profits attending: Girl Scouts, Youth First, Parenting Time Center and Chemo Buddies

Door Prize donated by: Missy Singer On Style

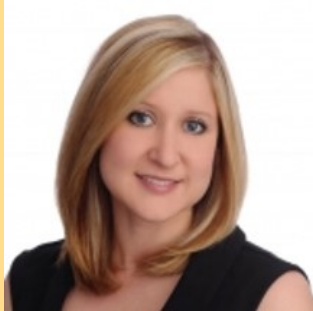
Register now for the March Membership Meeting

Jan 22
Feb 26
March 19*
April 23

May 23
June 25
July 23
August 20

September 24
October 29*
November 19*
December 10*

President's Letter



The Heart of Hospitality: Building Connections in Our Community

Dear Members,

As the chair of A Network of Evansville Women, I want to take a moment to explore the vital role that hospitality plays in our personal and professional lives.

In a world that often feels fast paced and impersonal, warmth and kindness of hospitality can create meaningful connections that elevate our interactions and strengthen our community.

The Essence of Hospitality

Hospitality goes beyond providing services; it's about making others feel valued and welcomed. Whether we're hosting an event, networking with colleagues, or simply reaching out to a fellow member, a hospitable attitude can transform the experience for everyone involved.

Why Hospitality Matters in Networking

1. **Fostering Relationships:** A hospitable environment encourages open communication and connection. When we make others feel comfortable, we pave the way for genuine relationships that can lead to collaboration and support.
2. **Creating Lasting Impressions:** A simple act of kindness—such as a warm greeting or thoughtful follow-up—can leave a lasting impression. In networking, these moments of hospitality can set you apart and open doors to new opportunities.
3. **Building a Supportive Community:** By prioritizing hospitality within our group, we create an inclusive atmosphere where everyone feels welcome. This sense of belonging is crucial for nurturing growth and collaboration.

Share Your Hospitality Moments

I encourage you to reflect on your experiences with hospitality. Have you had a memorable encounter that changed your perspective? Or perhaps a small act of kindness that made a big difference? Sharing these moments can inspire others in our community. In the meantime, check out one of my favorite books focused on hospitality, *Unreasonable Hospitality* by Will Guidara, at <https://www.unreasonablehospitality.com/>.

Thank you for being a part of ANEW. Together, let's continue to build a network grounded in hospitality and support, fostering connections that empower us all.

Warm regards,

March Advertisers

Featured Advertiser

Missy Singer On Style
Missy Singer



Monthly Advertiser

Kahn Dees Donovan and Kahn
Allison Comstock and Ashley Hollen



Board of
Directors

Membership

Committees

About ANEW

Mentoring

Advertisers for 2025

January

July

Featured Advertiser: Just Faux It -
Barbara Woodruff
Monthly Advertiser: The Only Facial -
Alyson Rider
Door Prize: The Only Facial - Alyson
Rider

February

Featured Advertiser:
Monthly Advertiser: NextHome Hahn
Kiefer - Becky Kasha
Door Prize: Baird Trust - Jackie
Russell

March

Featured Advertiser: Missy Singer On
Style - Missy Singer
Monthly Advertiser: Kahn, Dees,
Donovan and Kahn - Michele Graham
Door Prize: Missy Singer On Style

April

Featured Advertiser:
Monthly Advertiser:
Door Prize: Banterra Bank - MaNissa
Coon

May

Featured Advertiser: Within Sight -
Caron Leader
Monthly Advertiser: Harding
Shymanski - Michele Graham
Door Prize: Healthy Living Choices-
Alohana Jackson

June

Featured Advertiser:
Monthly Advertiser: EVSC Foundation
Door Prize:

Featured Advertiser:
Monthly Advertiser: Banterra Bank -
MaNissa Coon
Door Prize:

August

Featured Advertiser:
Monthly Advertiser:
Door Prize:

September

Featured Advertiser:
Monthly Advertiser:
Door Prize: Kemper CPA - Michelle
Smith

October

Underwriter: Charles & Charles -
Lindsay Charles
Door Prize:

November

Featured Advertiser: Bison Financial
Group - Tammy Schuler
Monthly Advertiser:
Door Prize: Affinity Insurance - Rhoda
Mattingly

December

Underwriter: Kemper CPA - Michelle
Smith
Door Prize:

If your organization or business
would like to advertise with
ANEW, please contact **Alohana
Jackson**.

Member Profile

Amy Mangold - United Way of
Southwestern Indiana

**What is your greatest achievement?

Personal: Donating bone marrow twice to my
uncle with leukemia (I was 26 and scared to
have surgery.) Professional: Being promoted to
the CEO position at United Way.

When I was little, I wanted to be a Rockette
when I grew up. I obviously didn't become a

Rockette but have been a dancer my entire life.

****What is your most relaxing habit? ****

Sitting in silence in nature while camping.

****What does ANEW mean to me?**

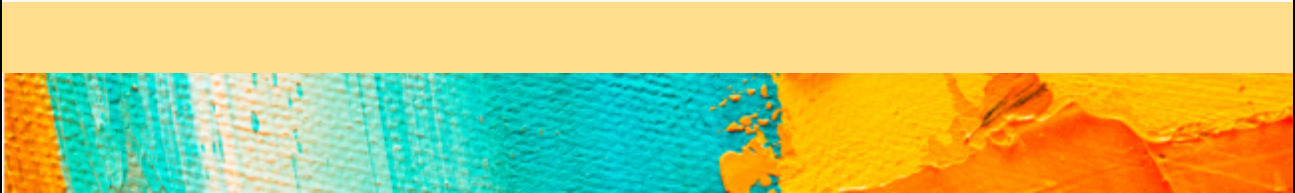
ANEW means I have a treasure-trove of intelligent, resourceful, engaging women that I can learn from, collaborate with, and form lasting friendships.

Amy has been a member of ANEW since June 2023.



Maximize your Membership!

- When corresponding with ANEW, please use info@evansvilleanew.org for your email.
- The deadline for registering for all meetings is the Friday before the meeting at 2 pm. This allows time to calculate attendance and notify ECC with reservation numbers.
- Please join in on after-hours networking on the [ANEW Facebook](#) page.



A Network of Evansville Women | PO Box 3192 | Evansville, IN 47731 US

[Unsubscribe](#) | [Update Profile](#) | [Constant Contact Data Notice](#)



Try email marketing for free today!