

October Annual Meeting

Masquerade Night of Mystery

Wednesday, October 22, 2014

Evansville Country Club

4:30 pm - 6:00 pm Pampering

6-7pm Program

GUESTS are \$25 per person.

MENU: House salad/rolls, Penne with holy trinity celery, green peppers, onions, corn and blackened chicken and Pumpkin cake with cream cheese icing

(Veggie Option must be made with reservation.)

Deadline for Reservation is Friday, Oct 17 at 2:00 pm.

<http://evansvilleanew.org>

Evening includes; Ghost auction, Pampering stations, proposed Slate of Officers, Woman of Action Award winner, Beer Tasting, Photo sessions, Make up Touchups, Massages, and more!

IN THIS ISSUE....

- ~ Underwriter
- ~Presidential Information
- ~Annual Meeting Vendors
- ~ 2015 Slate of Officers
- ~2014 ANEW Sponsors
- ~ 2014 Door Prize Sponsors

2014 MEETING DATES

- October 22
- November 19
- December 10

2015 DUES

2015 Annual Dues will be distributed at the end of October. Be on the lookout for your Statement for Dues.

2015 MEETING DATES

- January 28, 2015
- February 25, 2015
- March 18, 2015
- April 29, 2015



Masquerade Night of Mystery

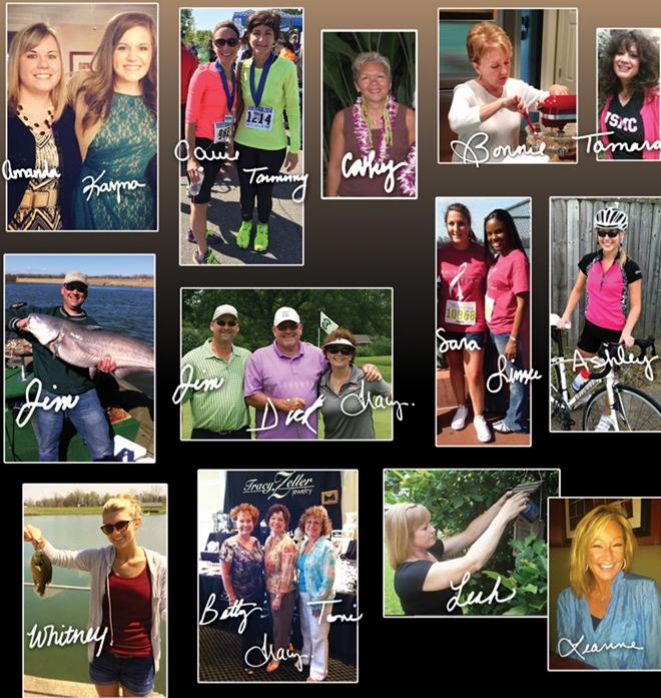
Services or Gift Baskets provided by:

- ❖ Banterra Bank
- ❖ Basketlases
- ❖ CAbi
- ❖ Cielo Luxury Shoe Boutique
- ❖ Cookies By Design
- ❖ Djà vu Vein Skin Care
- ❖ Diverse Salon
- ❖ Dove Chocolates
- ❖ Working Distributors
- ❖ Younique
- ❖ Evansville Eye Care
- ❖ Farm Bureau Insurance
- ❖ Fun Shots Photo Booth
- ❖ Fusion Day Spa
- ❖ Hafer Associates
- ❖ It Works
- ❖ Jones Wallace, LLC
- ❖ Juice Plus
- ❖ Kemper CPA
- ❖ LaQuinta Inn & Suites
- ❖ Mary Kay Cosmetics
- ❖ Massage Studio
- ❖ Nerium
- ❖ Oragami Owl
- ❖ Real Purity
- ❖ Shaklee
- ❖ S.P.A. Skin Care
- ❖ Stella & Dot Jewelry
- ❖ Tracy Zeller Jewelry

October Underwriter

This is who we are

Visit us M-F 9a-6p, Sat 10a-4p at the Tracy Zeller Jewelry showroom.



Tracy Zeller jewelry

812-423-4376

111 S. Red Bank Road ~ TracyZellerJewelry.com

Fans win @ Facebook.com/TracyZellerJewelry

May 27, 2015

June 24, 2015

July 22, 2015

August 19, 2015

September 23, 2015

October 28, 2015

November 18, 2015

December 9, 2015

BOARD OF DIRECTORS

[MaNissa Lemon](#)

President

[Stephanie Gerhardt](#)

1st Vice President,
Membership

[Katie Worman](#)

2nd Vice President,
Programs

[Jill Rawley](#)

Secretary

[Billie Heckel](#)

Treasurer

[Misty Seaton](#)

Director

[Lauren Jones](#)

Director

[Barbara McCarty](#)

Director

[Vicki McDonald](#)

Director

[Rita Bauer](#)

Director

[Sherri Alley](#)

Director

[Michelle Smith](#)

Director

[Nazan Wolfe](#)

Director

[Lori Young](#)

Director

[Angie Hargett](#)

Director

A note from the President...

Dear ANEW Membership,
Trick or Treat.....I know all of us are in for a treat at this year's Annual Meeting and Pampering Session on October 22nd at the Evansville Country Club. This year's theme is ANEW's Masquerade Night of Mystery and Enjoyment. If you've never attended our annual meeting, I highly encourage you to join us this year. There will be many ways to be pampered; chair massages, beer and wine tasting, jewelry cleaning, makeup and skin care, photo booth, chocolate tasting, hair styling, manicures and the list goes on. Pampering begins at 4:30pm with our meeting and program beginning promptly at 6pm. The fun doesn't stop with our pampering session, we have lots of wonderful things happening during the meeting: awards and recognitions, announcing the silent auction winners, presentation of next year's slate of officers and directors and so much more. Every year this meeting gets better and better, and I'm excited to see what this year's meeting has in store for our membership. It truly will be a night of mystery and enjoyment!
Please remember that all reservations for monthly meetings MUST be completed through our online reservation system. Please contact Lori Otmann or myself with any questions that you might have regarding our online reservation system.

As always, please feel free to email me directly at mflemon@banterra.com with any questions, concerns or thoughts that you have about ANEW. As our membership grows, so do our needs, and wants, and we want to hear from you. See everyone at the Annual Meeting!

Best wishes,
MaNissa Lemon



2015 Slate of Officers

President: *Billie Heckel*

1st VP Membership: *Katie Worman*

2nd VP Programs: *Rita Bauer*

Treasurer: *Angie Hargett*

Assistant Treasurer: *Bobbi Cobb*

2013 ANEW SPONSORS

January

Schultheis Insurance
The Women's Hospital

February

Banterra Bank/Omega Processing Solutions
Within Sight, LLC

March

Tracy Zeller Jewelry
Cielo Boutique

April

Kemper
Payne Wealth Partners

May

AlphaGraphics
Kemper

June

Deaconess Women's Hospital
Kemper

July

Deja vu Skin Care
4C of Southern Indiana

August

Janet Schultheis - Edward Jones
Kerri Zeien Photography

September

German American Bank
Kemper First choice

October Underwriter

Tracy Zeller Jewelry

November

Bowers Harrison
Banterra Bank

December

Kemper CPA

Membership Appreciation Underwriter

Bamberger, Foreman, Oswald & Hahn

Secretary: MaNissa Lemon

Directors: Ann Martin, Barbara McCarty, Jill Rawley, Lauren Jones, Michelle Smith, Misty Seaton, Sherri Alley, Stephanie Gerhardt, Janet Schultheis

Membership Recruitment Day

Newsletter Headline

Do you know someone interested in joining ANEW? If so, please be sure to invite them to our upcoming Membership Recruitment Event! We'll be sending you an invitation to share via email this week. If you have questions, please contact Membership Chair, Stephanie Gerhardt at stephaniemgerhardt@gmail.com.



Wednesday, November 12
12 noon – 1p.m.
or
4:30 p.m. – 5:30 p.m.

**FREE
to attend!**

Membership Recruitment Day

at the Evansville Country Club

Come learn about an exciting organization just for professional women to network and grow!
Light hors d'oeuvres and beverages will be provided.

Table Space Available to Promote your Business

At each ANEW meeting there are three tables available to any member for promotion of special events. The tables are set up in the lobby area of our meeting facility except for the October Annual meeting and the December Holiday meeting.

Examples of appropriate use are: members wishing to promote a not for profit event for which they are volunteering and a seminar, workshop or event hosted by a member's place of business. Table space is not to be used by retailers selling items in the normal course of business.

Table space is available on a first come, first serve basis. You are responsible for removing the material from the tables after the meeting. If you are interested in securing table space please contact Katie Worman, Second VP - Programs at kw@zossllaw.com

DOOR PRIZE SPONSORS

January - Schultheis Insurance

February - The Guitar Lab

March - Old National Events Plaza

April - Banterra Bank

May - Deja Vu Skin & Vein Center

June - The Women's Hospital

July - Tracy Zeller Jewelry

August - Edward Jones/ Janet Schultheis

September - Kemper CPA

November - Cielo Boutique

Copyright © 2014 A Network of Evansville Women. All rights reserved.
PO Box 3192 | Evansville, IN 47731
[Unsubscribe](#) | [Forward to a Friend](#)